







SANITARY FILTER HOUSINGS

The GV Sanitary filter housing series have been developed for using on sanitary applications as filtration of beverages such as beer, wine, mineral water, soft drinks. GV Filtri Industriali Sanitary filter has been designed in accordance to EN 13445 rule. The complete series is available with sizes from 1 cartridge to 30 cartridges and from 10" of 40" cartridges height. Cartridges socket connection is available for (226) Code7 Bayonet and (222) Code8 Single Open End. The housings of the series can be equipped on Inlet and Outlet with a wide range of connections as Clamp and DIN11851, other kind of connections can be supplied on request. Those housing are a high pressure series for not dangerous fluid, different category CE2014/68/EU PED, based on filter housing size.

| OIL & GAS | CHEMICAL & PETROLCHEMICAL | WATER TREATMENT | ENERGY | FOOD & PHARMA | INDUSTRIAL |
|---|---|---|---|---|--|
|  |  |  |  |  |  |

Applications

Water Treatment

- Drinking water filtration • Softening system protection

Food & Pharma

- Cosmetic • Fermentation • Beverage and Water • Chocolate • Dairy • Pre-Prefiltration • Prefiltration



Construction Materials

Wetted parts are built in Stainless Steel AISI 316L.

Gaskets can be requested in many kind of materials depending on the application. The standard gasket are in Silicone FDA Approved.

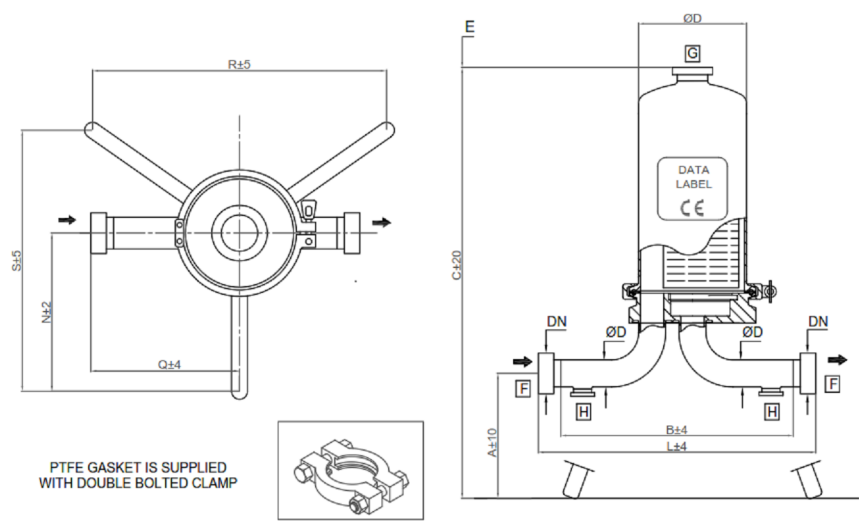
Certificates

The housings have been designed under 2014/68/EU PED. From Roughness certificates to Material certificates, GV Filtri is able to supply all the additional documentation you require.

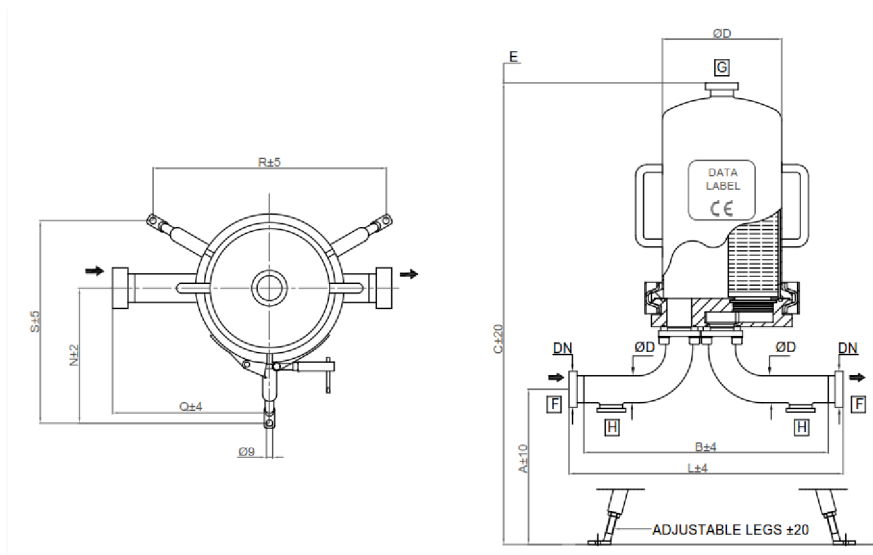
We can supply filter housings in I, II, III PED category, basing on the pressure used during the filtration process.

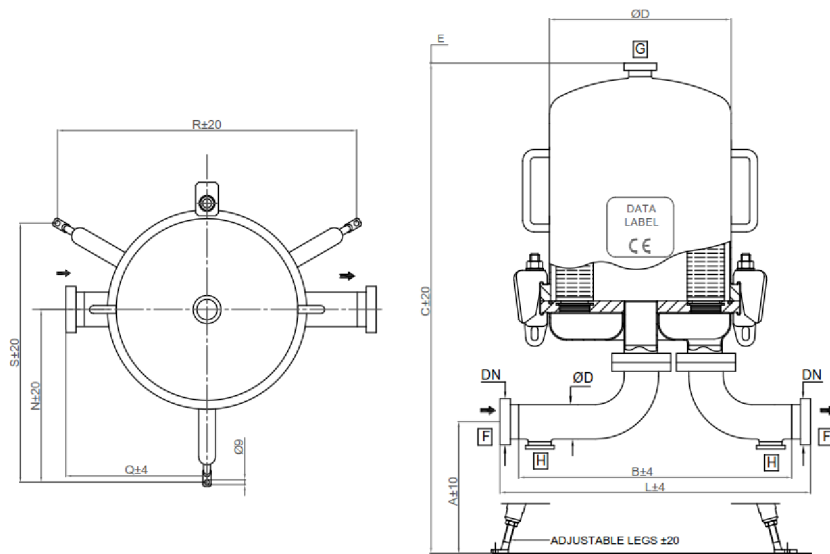
GV Sanitary Filter Housing is ATEX certified. It doesn't require additional certification costs. The user manual shows all the ATEX rules information.

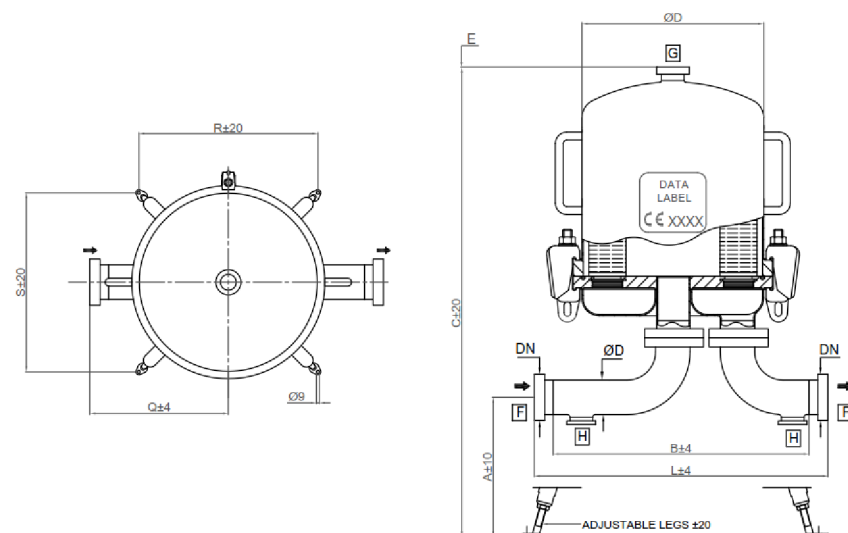
Filter Drawing Cartridge Quantity N°1



Filter Drawing Cartridge Quantity N°3-5-8







Dimensional Data

| CARTRIDGE x HEIGHT (N) | ØD | R mm | S mm | N mm | C mm | E mm | VOLUME litres (V) | PED category |
|---------------------------|--------|------|------|------|------|------|----------------------|-----------------|
| 01 x 10" | Ø101.6 | 339 | 326 | 207 | 790 | 300 | 3.0 | 4.3 |
| 01 x 20" | | 339 | 326 | 207 | 1040 | 550 | 4.8 | 4.3 |
| 01 x 30" | | 339 | 326 | 207 | 1290 | 800 | 6.7 | I |
| 01 x 40" | | 339 | 326 | 207 | 1540 | 1050 | 8.6 | I |
| | | | | | | | | |
| 03 x 10" | Ø168 | 357 | 310 | 206 | 816 | 290 | 7.3 | I |
| 03 x 20" | | 357 | 310 | 206 | 1065 | 540 | 12.6 | I |
| 03 x 30" | | 357 | 310 | 206 | 1314 | 790 | 17.8 | I |
| 03 x 40" | | 357 | 310 | 206 | 1564 | 1040 | 23.1 | II |
| | | | | | | | | |
| 05 x 10" | Ø219 | 400 | 347 | 231 | 825 | 290 | 11 | I |
| 05 x 20" | | 400 | 347 | 231 | 1075 | 540 | 20 | II |
| 05 x 30" | | 400 | 347 | 231 | 1325 | 790 | 29.1 | II |
| 05 x 40" | | 400 | 347 | 231 | 1575 | 1040 | 38.2 | II |
| | | | | | | | | |
| 08 x 10" | Ø273 | 448 | 388 | 259 | 846 | 290 | 21.3 | II |
| 08 x 20" | | 448 | 388 | 259 | 1096 | 540 | 35.5 | II |
| 08 x 30" | | 448 | 388 | 259 | 1346 | 790 | 49.7 | II |
| 08 x 40" | | 448 | 388 | 259 | 1596 | 1040 | 63.9 | II |
| | | | | | | | | |
| 12 x 10" | Ø350 | 425 | 410 | 279 | 930 | 290 | 41 | II |
| 12 x 20" | | 425 | 410 | 279 | 1180 | 540 | 66 | II |
| 12 x 30" | | 425 | 410 | 279 | 1430 | 790 | 88 | II |
| 12 x 40" | | 425 | 410 | 279 | 1680 | 1040 | 112 | III |
| | | | | | | | | |
| 18 x 10" | Ø400 | 505 | 480 | 304 | 950 | 290 | 54 | II |
| 18 x 20" | | 505 | 480 | 304 | 1200 | 540 | 85 | II |
| 18 x 30" | | 505 | 480 | 304 | 1450 | 790 | 115 | III |
| 18 x 40" | | 505 | 480 | 304 | 1700 | 1040 | 146 | III |
| | | | | | | | | |
| 24 x 10" | Ø450 | 465 | 455 | - | 970 | 290 | 73 | II |
| 24 x 20" | | 465 | 455 | - | 1220 | 540 | 112 | III |
| 24 x 30" | | 465 | 455 | - | 1470 | 790 | 151 | III |
| 24 x 40" | | 465 | 455 | - | 1720 | 1040 | 190 | III |
| | | | | | | | | |
| 30 x 10" | Ø550 | 550 | 550 | - | 1000 | 290 | 118 | III |
| 30 x 20" | | 550 | 550 | - | 1250 | 540 | 176 | III |
| 30 x 30" | | 550 | 550 | - | 1500 | 790 | 235 | III |
| 30 x 40" | | 550 | 550 | - | 1750 | 1040 | 293 | III |

STANDARD CONNECTIONS

CONNECTIONS TYPE

N°1 CARTRIDGES HOUSING

N°3 CARTRIDGES HOUSING

N°5 CARTRIDGES HOUSING

N°8 CARTRIDGES HOUSING

N°12 CARTRIDGES HOUSING

N°18 CARTRIDGES HOUSING

N°24 CARTRIDGES HOUSING

N°30 CARTRIDGES HOUSING

:Butt Weld, Din 11851 or TriClamp

:DN25

:DN40

:DN50

:DN50

:DN65

:DN65

:DN65

:DN80